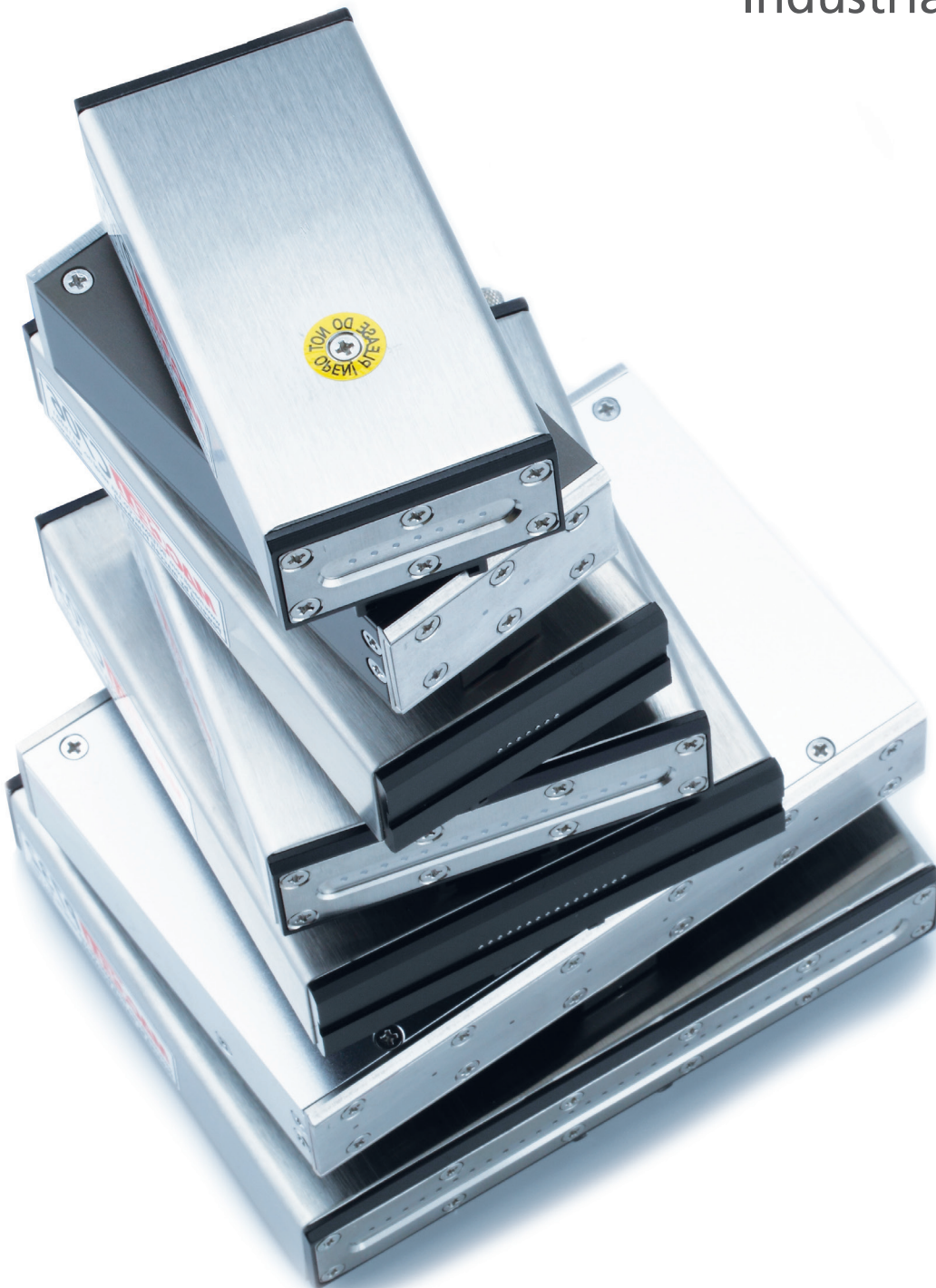


Innovation & Ingenuity

InterMac

Industrial Inkjet System



interMAC



Contents

Values of Inter Mac	4
maccell DOD Technology	4
maccell DOD Ink Jet	6
maccell Pigment Ink Jet	10
maccell HP7	11

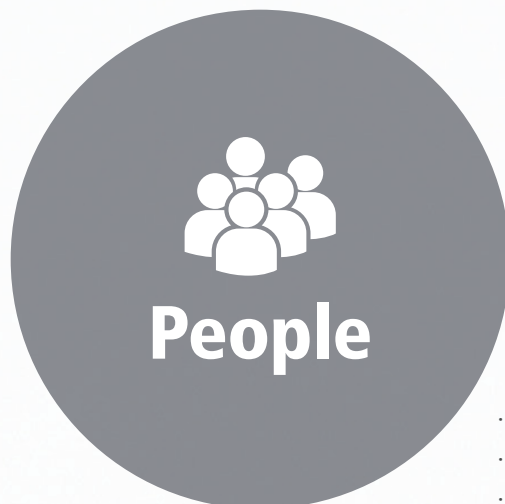


maccell T3+Marker	12
maccell MP7	14
Handy-jet	16
MAC2000 CLP	17
maccell Custom Design	18

Values of Inter Mac

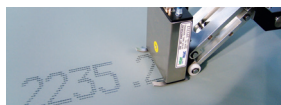


- Knowledge from long experience
- Pursue for excellence in quality
- Innovation on proprietary technology



- Reliable engineers and staff
- Highly skill technicians you can trust
- Excellent customer servicers

macell™ DOD Technology



Fastest print speed
(1,250 Drops per Second)



Smallest design
(Only 4mm Diameters / each solenoid valve)



Lightest structure
(Only 3grams / each solenoid valve)



Innovation and Ingenuity
Value Beyond Expectations

interMAC

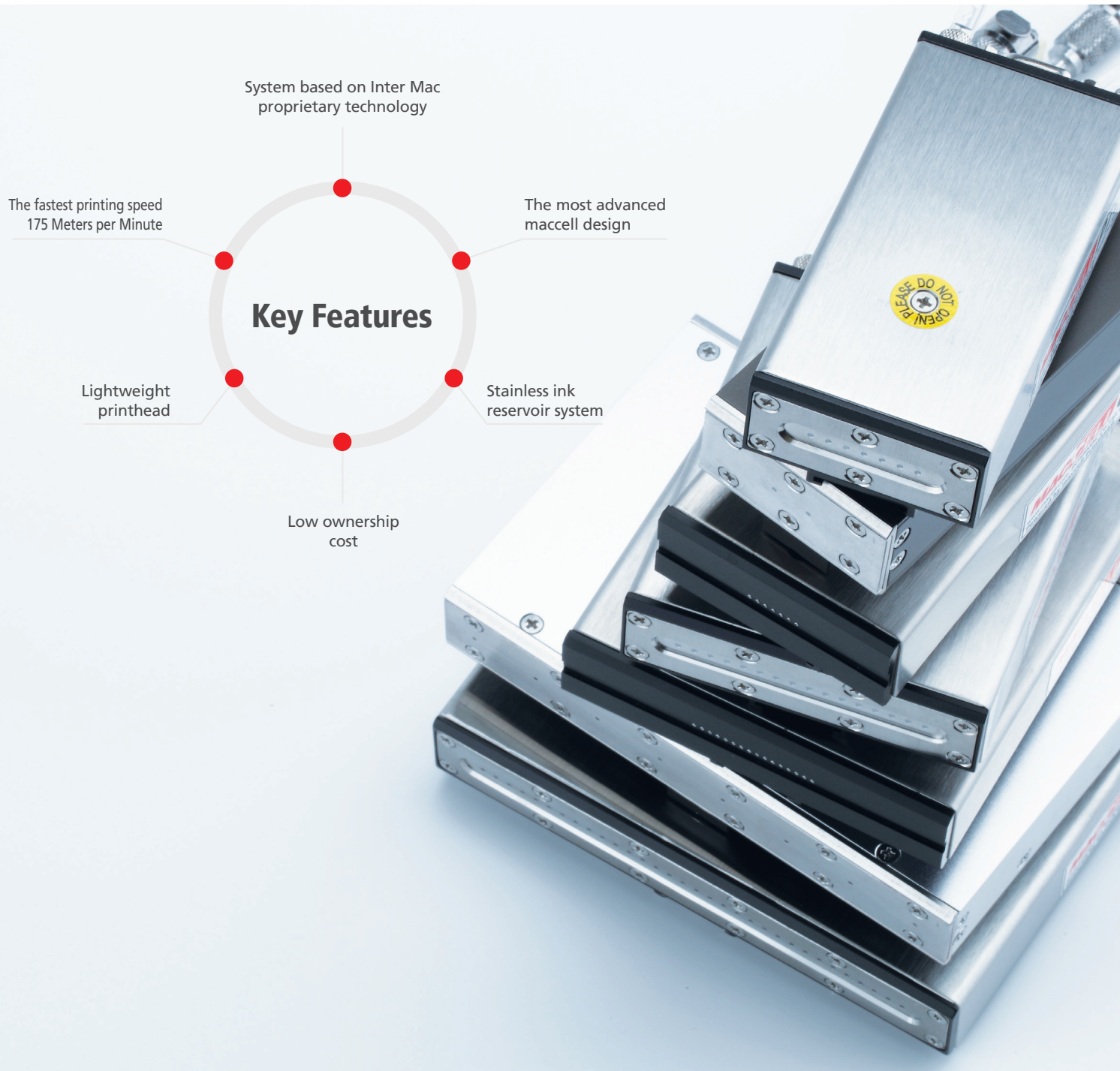


Robust design
Whole Stainless Steel Base



Easy maintenance & adjust drops
(Pocket type & Easy disassembly design)

macell DOD Ink Jet



Product Info

macell DOD Ink Jet printing system has been focused on various applications and easy to operate. It has designed to impact, fine ink jet printer and adopts separated design, large graphic LCD and dialogue menu. You could get flexible, fine marking with fast 175 meters per minute speed. LP7000+ inkjet controller, one of macell technology, can be used in a wide variety of field applications and designed to maximize user convenience with little supervision. Multi-language support and interactive menu display, easy message edition and other functions are a perfection choice for many users.

maccell™ Printhead

maccell printhead is another product of Inter Mac proprietary technology. It is designed to install and maintain easily with the most compact size. The solenoid valve in the printhead only weighs 3 gram and the size is 4 mm. Its size and structure make maccell printhead very unique and one of the most efficient device in the industry. Fast speed and easy-to-use valve array enable the system to adjust the size of large characters to smaller than other systems. In addition, pocket type solenoid valve helps users reduce maintenance costs and time. Inter Mac offers two types of maccell printhead. Printhead Type "C" uses water-based ink to mark on carton box and Type "P" printhead uses MEK based ink for non-absorbing surfaces like PP bag, steel, vinyl and glass.



maccell™ Solenoid Valve



maccell™ MEK based Printhead

- Name : **P706 Printhead**
- Nozzle Pitch : 4.2mm x 7 nozzles
- Orifice Diameter : 140 micron
- Marking speed : 1,250 Drops per Second
- Operating Conditions : DC 18-24V, 300mA-700mA(Max.)
- Ink : MEK, Alcohol Based ink



- Name : **P703 Printhead**
- Nozzle Pitch : 4.2mm x 16 nozzles
- Orifice Diameter : 140 micron
- Marking speed : 1,250 Drops per Second
- Operating Conditions : DC 18-24V, 300mA-700mA(Max.)
- Ink : MEK, Alcohol Based ink



- Name : **P732 Printhead**
- Nozzle Pitch : 4.2mm x 32 nozzles
- Orifice Diameter : 140 micron
- Marking speed : 1,250 Drops per Second
- Operating Conditions : DC 18-24V, 300mA-700mA(Max.)
- Ink : MEK, Alcohol Based ink



maccell™ WATER based Printhead

- Name : **C706 Printhead**
- Nozzle Pitch : 1.7, 2.2 or 4.0mm x 7 nozzles
- Orifice Diameter : 140 micron
- Marking speed : 800 Drops per Second
- Operating Conditions : DC 18-24V, 300mA-700mA(Max.)
- Ink : Water Based ink



- Name : **C703 Printhead**
- Nozzle Pitch : 1.7, 2.2 or 4.0mm x 16 nozzles
- Orifice Diameter : 140 micron
- Marking speed : 800 Drops per Second
- Operating Conditions : DC 18-24V, 300mA-700mA(Max.)
- Ink : Water Based ink



- Name : **C732 Printhead**
- Nozzle Pitch : 1.7, 2.2 or 4.0mm X 32 nozzles
- Orifice Diameter : 140 micron
- Marking speed : 800 Drops per Second
- Operating Conditions : DC 18-24V, 300mA-700mA(Max.)
- Ink : Water Based ink

macell Special Designed by Inter Mac



Stainless Steel Ink Supply System

Maccell ink reservoir is made of stainless steel. Its robust structure and durability help to provide ink continuously and protect from any impact. Inter Mac provides three sizes of ink reservoirs 2.5, 5 Liters and 14 Liters.



Wave Utility Bracket

Wave Utility Bracket is designed by Inter Mac and has been made to solve error factor caused by difference of distance between product and printhead. It is useful on PP bag, paper bag, drum, uneven surfaces which cannot be moved to a certain position. It can keep regular distance between Bracket and products, so it is possible to clean and fine marking on various surface. It also could be mounted top, side and bottom according to your preference.



AUTO Flush System

Easy cleaning system enables the machine to clean inside of the printhead. It helps easy maintenance and completes cleaning work. In addition, it is possible to use for a long time as ink refilling just one time because there are 3 types of large capacity SUS Containers.



Air Supply System

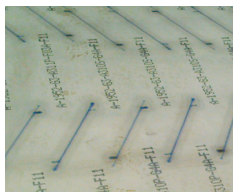
Inter Mac installs air supply system A-1 into the printer for production site where factory air cannot be supplied or other particular environment.

Fluids

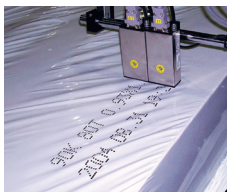
Inter Mac develops and distributes a wide variety of inks to our customers worldwide for maccell marking systems. The quality and chemical compatibility with all of maccell products are the top priority of Inter Mac.



Cases



Shipyard marking



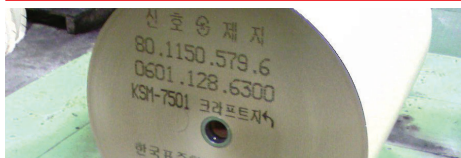
Building materials marking



CartonBox marking



Paper Bag marking



Paper Roll marking



Primer Steel Plate marking



Chemical PP Bag marking



Aluminum Plate marking



Cement Bag marking

Specifications

ITEMS	macell 7100+plus	macell 7200+plus	macell 7400+plus
Character Font(HXW)	One Line : 5X5, 5X10, 7X5, 7X10	One Line : 5x5, 5x10, 7x5, 7x10, 12x9, 12x18, 16x10, 16x20 Two Lines : 5x5, 5x10, 7x5, 7x10	One Lines : 32x20, 32x40 Two Lines : 12x9, 12x18, 16x10, 16x20 Four Lines : 7x5, 7x10
Character Height	7nozzles 26mm "P" Type 14 or 24mm "C" Type	16nozzles 63mm "P" Type 33 or 60mm "C" Type	32nozzles 130mm "P" Type 68 or 124mm "C" Type
Data Storage	Maximum 1,000 Characters / 1 Line (7Dots, 16Dots)		500 Character / 1 Line (32Dots)
Print Speed	Up to 175 Meters per Minute (Max.) "P" Type (the world's fastest speed) Up to 125 Meters per Minute (Max.) "C" Type		
Memory	100 Text memory, 50 Graphic memory		
LCD Display	37cm(H)X70cm(W) Dots Back Light Graphic LCD		
Font Reduction	0-5 Step Changeable		
Print Function	Date, Real Time, Expiration Date, Shift Time, Up and Down Counter, Odd and Even Counter, Batch Counter, Single / Double / Light Print, Repeat Print		
Hot Key Function	Print Direction, Dot size, Print Speed, Print Delay, Purge		
Keypad	Tone up Keypad, 59 Keys, Dialogue Menu		
Ink Container	Standard 2.5 Liters Stainless Steel Container (Option : 5, 14 Liters)		
Inks	MEK Base, Alcohol Base "P" Type, Water Base "C" Type		
Signal	Photo Sensor, Speed Encoder		
Power	100-240V, 50/60Hz, 40W		
Interface	RS485, RS232		
Networking	Up to 15 controllers		
Operating Temperature	5-45°C		

macell Pigment Ink Jet



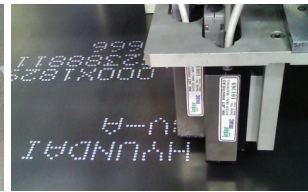
Product Info

macell pigment inkjet marking system provides continuous ink circulation throughout the ink container, ink tubing and printhead to prevent settling of pigments. The industry demands high system availability and process stability. The DOD convinces with its reliability and minimum maintenance requirements. macell system can mark on any surfaces like metal, glass, ceramic, stone, wood, carpet, textiles or organic material. The marking system has proven itself on any materials from almost all industries.

Cases



Posco steel marking



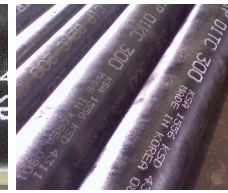
Hyundai steel marking



Steel pipeline marking



Cast iron pipe white marking



Black pipe line marking

Pigment System



Heavy Pigment based Ink Marking system with Auto Cleaning & Circulation Device



- Name : **P703L Printhead**
- Nozzle Pitch : 4.2mm
- Orifice Diameter : 250 micron
- Marking speed : 1,250 Drops per Second
- Operating Conditions : DC 18-24V, 300mA-700mA(Max.)
- Ink : MEK/Heavy Pigment based Ink (White, Yellow)

macell HP7



Hand Held Marking Device

macell T3⁺ Marker



Product Info

macell T3⁺ Marker adapted Drop On Demand(DOD) Technology, is the non-contact dot and line marking device at high print speed especially for error detecting purpose. The valve and nozzle have been designed to minimize nozzle blocking. It also includes the adjusting device which can control ink volume minutely.

In addition, macell T3⁺ Marker can be easily applied to various industrial site such as specialty film, semiconductor, auto insertion machine, vision machine, pipe manufacturing and etc.

Cases



Ink Supply System

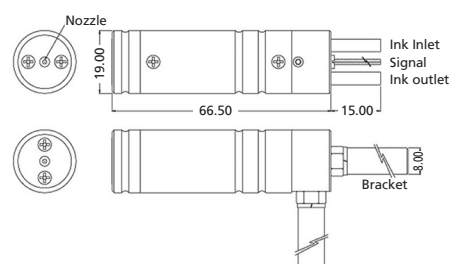


1 Liter Stainless Steel
Ink Supply System

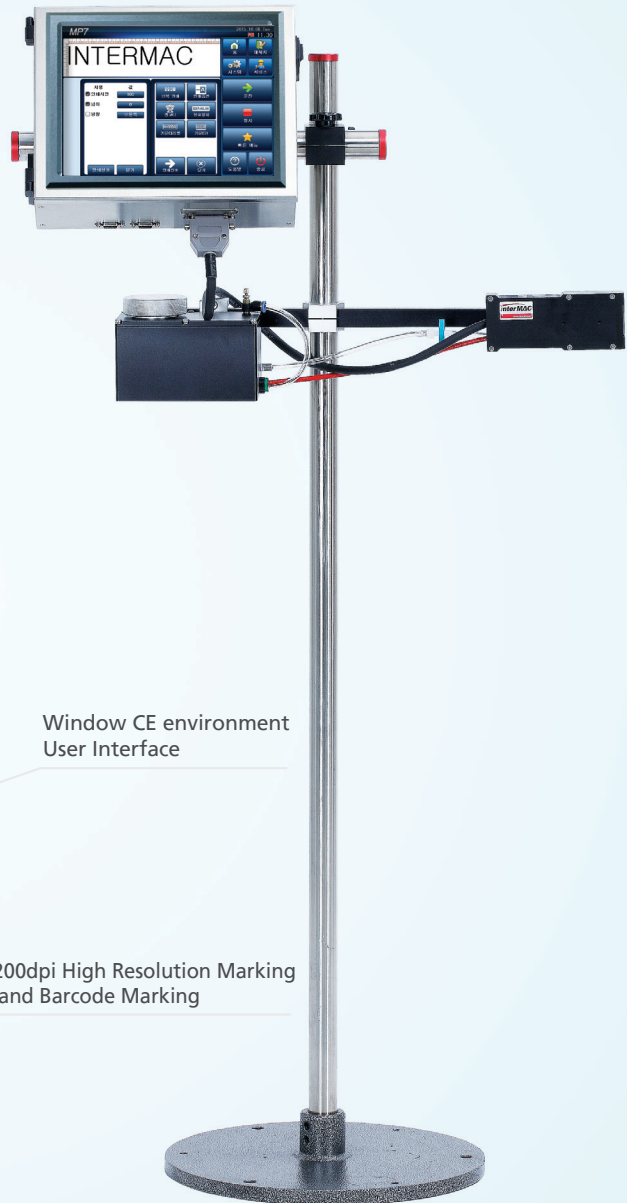
Specifications

Items	Description
Marking distance	25mm (Max.)
Marking speed	2 Meters per Second
Dot size	1.2-3.5 mm (a diameter)
Type of Ink Jet	Drop On Demand
Marker Weight	70g
Nozzle open time	1 Hours
Power	100-240V, 50/60Hz, 40W
Input Signal	DC24V Photocell, I/O signal, Speed Encoder
Basic Function	Delay, Speed & Dot Size, Purge
Interface	RS485
Ink Container	1 Liter SUS Ink Ccontainer (Option : 2.5, 5 Liters and 14 Liters)
Inks	MEK Base "P" type
The color of Ink	Black, Blue, Red, Green, White, Yellow

Dimension & Marking Type



macell MP7



The most progressive High Resolution
Ink Jet Marking System

10.4" Color
Touch Panel LCD

Window CE environment
User Interface

Key Features

Design for User Friendly
and Easy System

200dpi High Resolution Marking
and Barcode Marking

Simple and Safe
Ink Supply

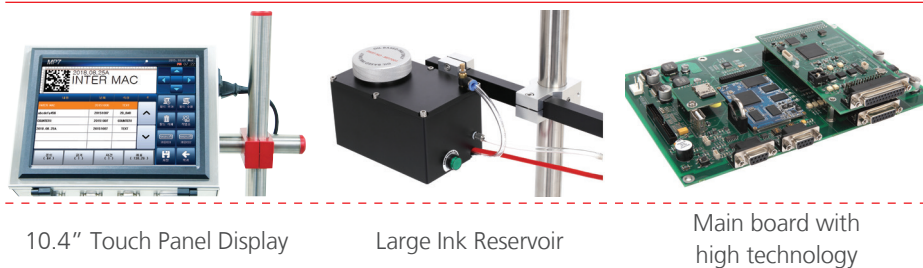
Product Info

MP7 is designed with Xaar™ printhead engine that can print 200dpi. The printhead has either 126 or 500 nozzle, and it can print lot number or bar code in incredibly fast speed. It also runs Window based operating system that provides many functions and easy-to-use interface. With high resolution 10.4" color touch panel LCD and high durability, this system suits for any environment.

Cases



Features



Specifications

Items	Description
OS (CPU)	Window CE (XILINX SPARTAN-6)
LCD	10.4" TFT-Color LCD (800x600), Touch Screen
Memory	8G SD Card, USB 2.0
Interface	RS232 / RS485 / Ethernet/Encoder
Power	+24V / 5V
Printhead	Xaar 126 Nozzles, 17mm Height, 200dpi
Print Speed	60 Meters per Minute (Max.)
Functions	Auto Flushing
Operating Environment	Temperature : 5-45℃, Humidity : 10-90%

Handy-jet



The most economical Ink Jet Printer

Providing with excellent application to workplace

Integrated system of controller, printhead and ink reservoir

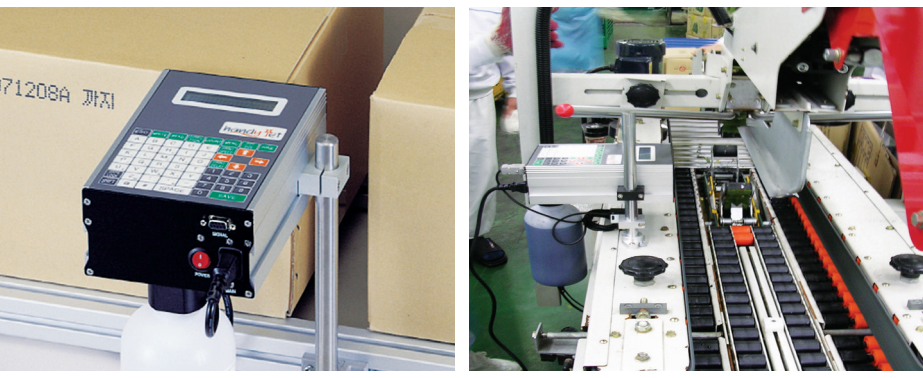
High speed marking by the 100 Meters per Minute

Ready to use by plug-in

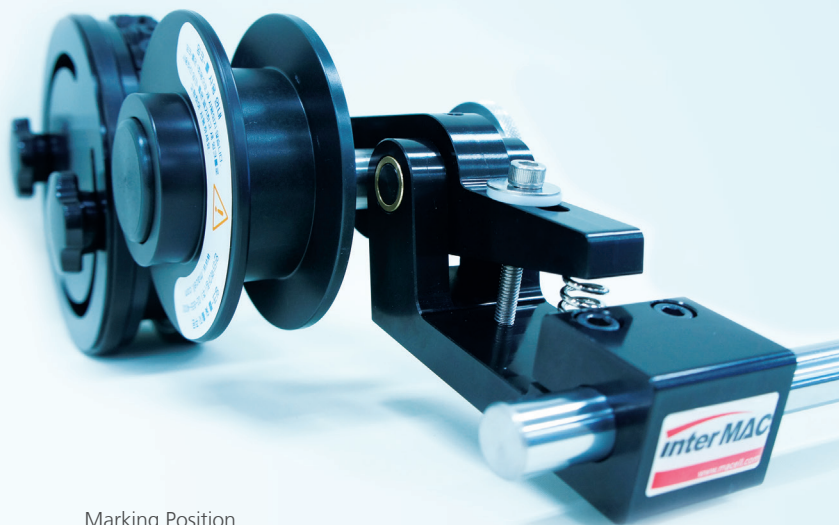
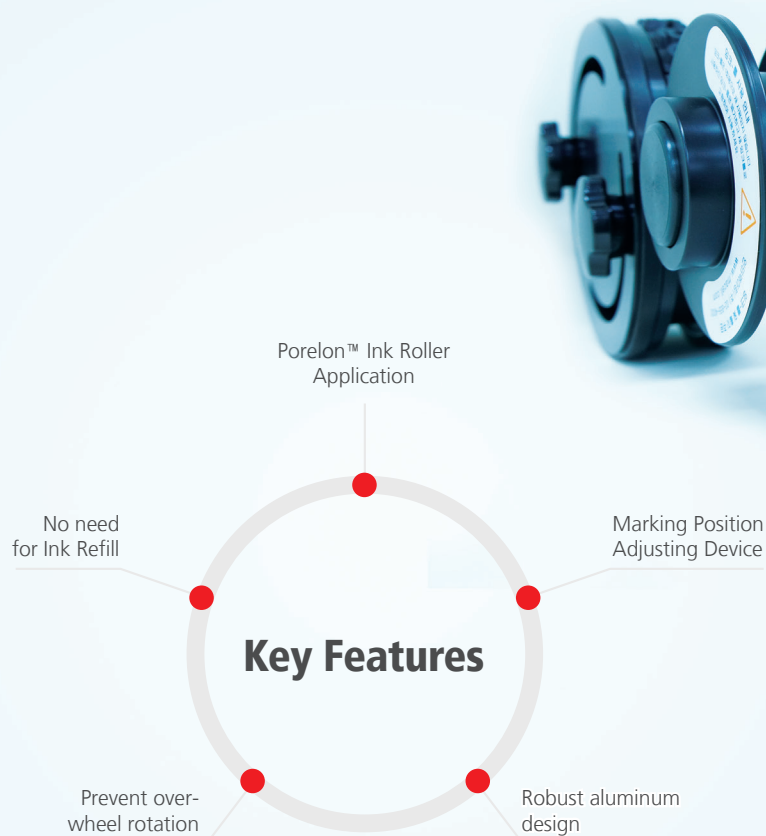
Key Features

Product Info

Inter Mac has built hand-jet printers on a proven concept that provides reliability, efficiency and ease of use. It incorporates innovative simplicity and flexibility. Characterized by their compact size, handy jet is perfect for one side case coding for lot numbers, dates, and counter. It guarantees print quality and long printhead life.



MAC-2000 Conveyor Line Printer

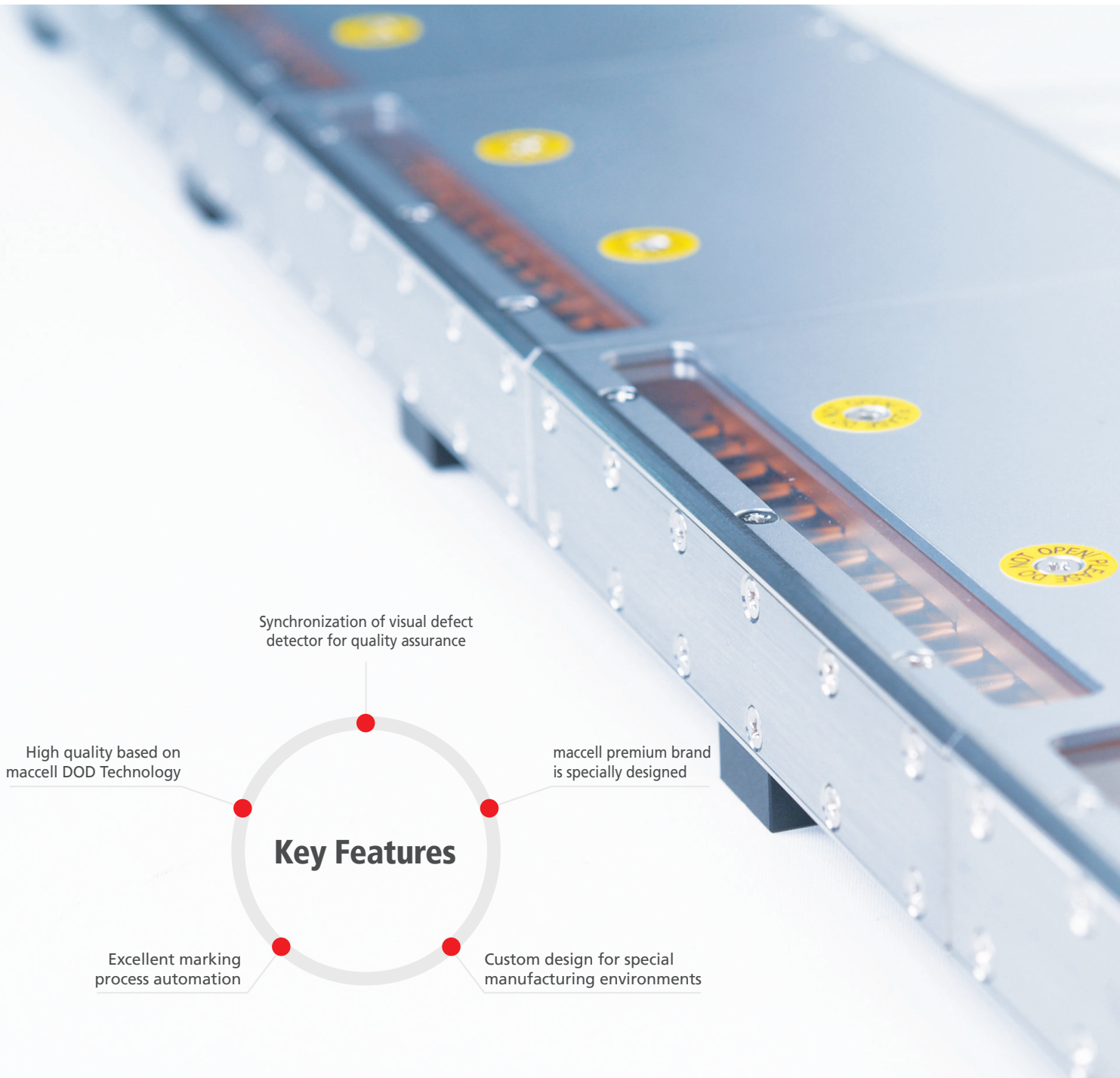


Product Info

Inter Mac MAC-2000 is a conveyor line printer that has mounting structures and program-mable ink delivery systems make installation and operation easy. This coder is best suited for applying date codes or limited product information on cartons and other porous surface materials. By using Porelon ink rolls enable user to continue using up to 45,000 to 55,000 boxes without changing ink cartridges. As the print wheel rotates, ink supplied to the printing dies with an ink roller for clear and even printing.



macell Custom Design



Product Info

Our system is made with macell Drop on Demand (DOD) technology with custom design for users who need marking printers for special manufacturing environment. Inter Mac always tries to meet demands from customers and provides a system that is best suitable for their field. Inter Mac provides an integrated system with special specifications. They include controllers, printheads, ink supply systems and automatic cleaning devices.

Printheads



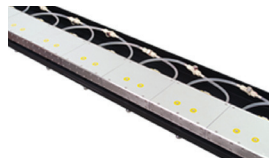
- Name : **macell™ P708 custom made**
- Nozzle Pitch : 20mm x 8 nozzles
- Orifice Diameter : 140 micron
- Marking speed : 1,250 Drops per Second
- Operating Conditions : DC 18-24V, 300mA-700mA(Max.)
- Ink : MEK, Alcohol Base ink



- Name : **macell™ P716 custom made**
- Nozzle Pitch : 10mm x 16 nozzles
- Orifice Diameter : 140 micron
- Marking speed : 1,250 Drops per Second
- Operating Conditions : DC 18-24V, 300mA-700mA(Max.)
- Ink : MEK, Alcohol Base ink



- Name : **macell™ P702 custom made**
- Nozzle Pitch : 10mm x 2 nozzles
- Orifice Diameter : 140 micron
- Marking speed : 1,250 Drops per Second
- Operating Conditions : DC 18-24V, 300mA-700mA(Max.)
- Ink : MEK, Alcohol Base ink



- Name : **macell™ P716 Printhead array**
- Nozzle Pitch : 10mm x 16 nozzles
- P716 Printhead 10EA Array
- Total marking length 1,590 mm

Ink Supply Systems



Custom made ink supply system

- Ink Supply Volume : 5 Liters
- Cleaner Supply Volume : 5 Liters
- Ink Container Material : Stainless Steel
- Function : Auto Cleaning device, Ink and cleaner low alarm, Waste overflow alarm, Air pressure warning alarm
- Inks : MEK, Alcohol Based Ink



Explosion proof Custom made ink supply system

- Ink Supply Volume : 5 Liters
- Cleaner Supply Volume : 5 Liters
- Ink Container Material : Stainless Steel
- Function : Auto Cleaning device, Ink and cleaner low alarm, Waste overflow alarm, Air pressure warning alarm, Gas leakage alarm, Door open alarm
- Inks : MEK, Alcohol Based Ink



Explosion proof Custom made ink supply system

- Ink Supply Volume : 5 Liters
- Cleaner Supply Volume : 5 Liters
- Ink Container Material : Stainless Steel
- Function : Auto Cleaning device, Ink and cleaner low alarm, Waste overflow alarm, Air pressure warning alarm, Gas leakage alarm, Door open alarm
- Inks : MEK, Alcohol Based Ink

Fluids

Inter Mac offers a wide variety of ink for users from different industries. All consumables are thoroughly inspected and go through meticulous quality control process. We guarantee clear and precise marking characters, code and numbers.



Distributed By: PrintJet Corp.
7816 Burden Road
Machesney Park, IL 61115
p. 815-877-7511 f. 815-877-7621
www.printjet.net E-mail: salesinfo@printjet.net